

i-PRO Configuration Tool

Operation Flow

1. Start Up and Log in

2. Select mode / functions

Basic mode

- Change IP Address
- Administrator Registration
- Download Files
- Upload Files
- Update Firmware
- Camera Restart

You need to select functions what you would like to perform.

Professional mode

- Change IP Address
- Administrator Registration
- Download Files
- Upload Files
- Update Firmware
- Camera Reset / Restart
- Configure Cameras
- Configure Recorders
- Send a CGI List
- Certification Management
- Ext. Software Management
- Status of Cameras

3. Device detection and connection

4. Main (Home) Screen

Perform various operations

1. Start Up and Log in

Start Menu on Windows OS ->
[i-PRO] -> [i-PRO Configuration Tool]



Log in

Username
admin

Password
••••••••

☐ Show the entered characters for Password as it is.

☒ When this check box is turned on, it is possible to check whether this tool version and the connected devices are the latest by connecting to the Internet.

☒ Send anonymous data to improve this software and user experience.

Log in

2. Select mode / functions

Select mode / click the function what you would like to operate and press "Next".

Select Menu

From next time, it will operate according to the current settings. If you would like to change the settings, click [Option] button on the title bar to display the menu.

Select the network adapter of the IP address used to communicate with the devices.

Launch the setting screen of Windows network settings

Select the start mode.

☒ Basic mode
Please select the task icons what you would like to execute.

Initial Settings

- Change IP Address
- Administrator Registration

Maintenance

- Download Files
- Upload Files
- Update Firmware
- Camera Restart

☐ Professional mode
The following full functions are available.

- Change IP Address
- Configure Recorders
- Ext. Software Management
- Update Firmware
- Administrator Registration
- Send a CGI List
- Download Files
- Camera Reset / Restart
- Configure Cameras
- Certification Management
- Upload Files
- Status of Cameras

☒ Detect devices within the same segment at startup automatically.
☐ Do not show this dialog at the next startup.

Next

3. Device detection and connection

To connect to the device, you need to enter the username and password of the device.

Detection Results

The following devices were newly detected.
Please get the further setting information of the target devices by [Start] button.

IP Address	Model	Camera title	MAC Address	Serial No.	Version	HTTP(S)
192.168.0.101	X6501	WV-X6501	88-13-40-71-88-48	8100	8.0	
192.168.0.102	SS-1CM701		88-13-40-71-88-48	8100	8.0	
192.168.0.103	S2131L	WV-S2131L	88-13-40-71-88-48	8100	8.0	
192.168.0.104	S2131L	WV-S2131L	88-13-40-71-88-48	8100	8.0	
192.168.0.105	X4701L	WV-X4701L	88-13-40-71-88-48	8100	8.0	
192.168.0.106	SPN2104W	WV-SPN2104W	88-13-40-71-88-48	8100	8.0	
192.168.0.107	NX100		88-13-40-71-88-48	8100	8.0	
192.168.0.108	S2131	WV-S2131	88-13-40-71-88-48	8100	8.0	
192.168.0.109	S2131	WV-S2131	88-13-40-71-88-48	8100	8.0	

Total: 9

Input Username and Password to access the devices.

Camera

Username
admin

Password
••••••••

Recorder

Username
ADMIN

Password
••••••••

Others

Username
••••••••

Password
••••••••

☐ Show the entered characters for Password as it is.
☒ Use this settings next time

Start

4. Main (Home) Screen

(a)<Basic mode / Professional mode> common function

- (i)[Hamburger Icon] Switch between icon display and detailed display of the operation menu.
- (ii)[Select Menu] Select function menu.
- (iii)[Change IP Address] Set the IP address of the device.
- (iv)[Administrator Registration] Perform the initial settings of the device administrator.
- (v)[Download Files] Perform device settings / log file download
(You can also create a configuration report)
- (vi)[Upload Files] Upload the setting file to the device.
- (vii)[Update Firmware] Update the firmware on the device.
- (viii)[Camera Restart] Restart the cameras.

(b)<Professional mode> function

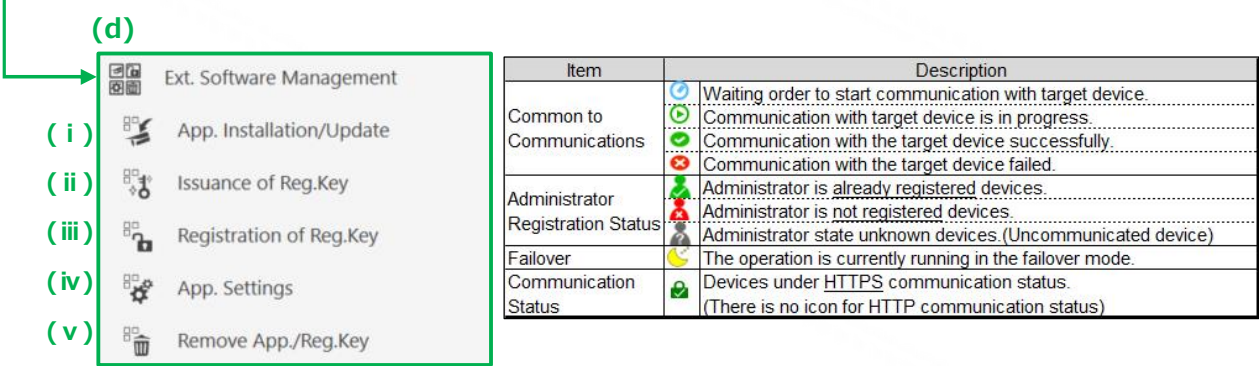
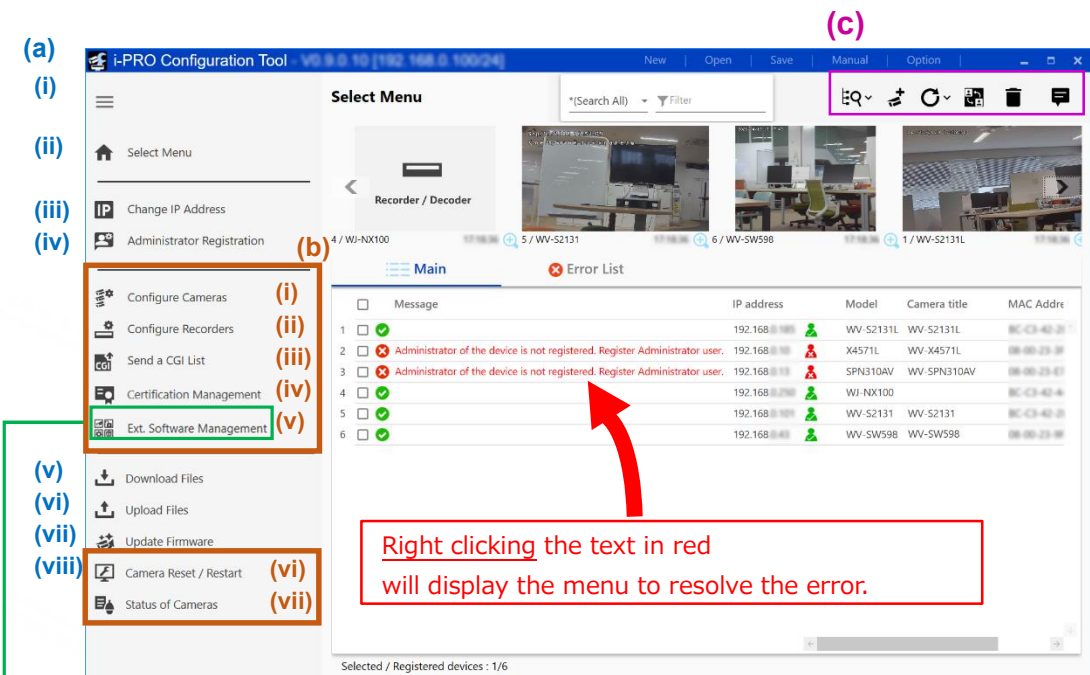
- (i)[Configure Cameras] Set multiple cameras from one unit.
- (ii)[Configure Recorders] Configure recorder settings (offline)
(Use the basic mode "Upload Files" to send settings to the device.)
- (iii)[Send a CGI List] Send CGI list to device
- (iv)[Certification Management] Manage certification for devices.
- (v)[Ext. Software Management] Configure extension software / license settings.
- (vi)[Camera Reset / Restart] Initialize / restart the cameras.
- (vii)[Status of Cameras] Retrieves / displays of camera operating status.

(c) Operation menu



- (i)[Auto Device Detection] Devices on your own / other subnets can be detected and added
- (ii)[Manual Device Addition] Add cameras (offline)
- (iii)[Reload] Update the device list / thumbnail image view.
- (iv)[Credential Settings]
Change Username and Password to access the devices.
- (v)[Delete Devices] Delete the devices specified in the device list.
- (vi)[Notice] If there is notification, it will be displayed at the bottom right of the screen.

Please note that the function for changing the settings of devices such as cameras and recorders is in "professional" mode so that you will not accidentally change the detailed settings of your device.



(d) Sub menu of "Ext. Software Management"

- | | | |
|---------|----------------------------|---------------------------------------------------------------------------------------------------------------------------------------------------------------------------------|
| (i) | [App. Installation/Update] | Install / update the Ext. Software
Download the latest version of "Extension software Package *2 and unzip it. Specify the unzipped folder in the Folder field. |
| (ii) | [Issuance of Reg. Key] | Issue a Reg. Key (Registration Key)
Issue a Reg. Key by entering the obtained Activation Key No./Registration ID and enter the User ID/Password of Key Management System *3. |
| (iii) | [Registration of Reg. Key] | Register the issued the Reg. Key |
| (iv) | [App. Settings] | Configure the application settings |
| (v) | [Remove App./Reg. Key] | Delete the application / Reg. key |

*2 : Please obtain the Extension Software Package from the following URL.
https://i-pro.com/products_and_solutions/en/surveillance/learning-and-support/tools/ict/extension-software-package

*3 : This function will be not available in case of maintenance of Key Management System or

Professional mode

Basic mode

[Download Files](#)

☒ Download Files

It is possible to download the selected files. When [Start] button is clicked, Download Files will be started. Are you sure to continue?

* Please use the "Log Files" only when the manufacturer requests to send the log.

☒ Configuration Files

☐ JPEG still images (For cameras only)

☐ Log Files

☐ Create a new Report of the Device List and Image View.

Upload Files

Select "Category" of the devices to which the configuration files is to be uploaded. When [Start] button is clicked, Upload Files will be started. Are you sure to continue?

Category
Recorder Configuration File

File name

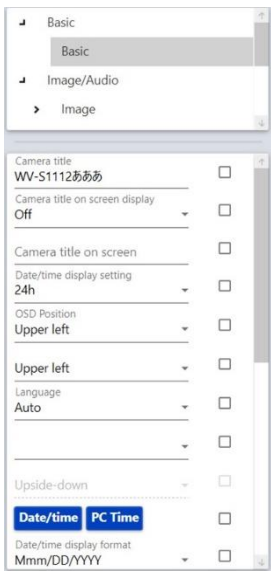
☐ Overwrite network settings.

Update Firmware

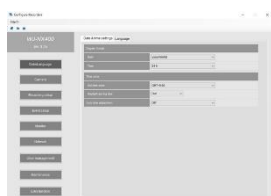
Select firmware folder

Folder

Configure Cameras



Configure Recorders



[Main](#)
[ONVIF Conformant Device](#)

ONVIF® conformant devices are displayed in the “ONVIF conformant Device” tab.

The following ONVIF compliant devices have been confirmed to work with this software.

AXIS: M1135, M3047-P, M3066-V, M5065, P1378, P1455-LE, Q1614

Hanwha: PNO-A6081R, PND-A6081RV, QNB-6002, QNF-8010, XNF-8010R

Apache License

Version 2.0, January 2004

http://www.apache.org/licenses/

TERMS AND CONDITIONS FOR USE, REPRODUCTION, AND DISTRIBUTION

1. Definitions.

"License" shall mean the terms and conditions for use, reproduction, and distribution as defined by Sections 1 through 9 of this document.

"Licensor" shall mean the copyright owner or entity authorized by the copyright owner that is granting the License. "Legal Entity" shall mean the union of the acting entity and all other entities that control, are controlled by, or are under common control with that entity. For the purposes of this definition, "control" means (i) the power, direct or indirect, to cause the direction or management of such entity, whether by contract or otherwise, or (ii) ownership of fifty percent (50%) or more of the outstanding shares, or (iii) beneficial ownership of such entity. "You" (or "Your") shall mean an individual or Legal Entity exercising permissions granted by this License. "Source" form shall mean the preferred form for making modifications, including but not limited to software source code, documentation source, and configuration files. "Object" form shall mean any form resulting from mechanical transformation or translation of a Source form, including but not limited to compiled object code, generated documentation, and conversions to other media types. "Work" shall mean the work of authorship, whether in Source or Object form, made available under the License, as indicated by a copyright notice that is included in or attached to the work (an example is provided in the Appendix below). "Derivative Works" shall mean any work, whether in Source or Object form, that is based on (or derived from) the Work and for which the editorial revisions, annotations, elaborations, or other modifications represent, as a whole, an original work of authorship. For the purposes of this License, Derivative Works shall not include works that remain separable from, or merely link (or bind by name) to the interfaces of, the Work and Derivative Works thereof.

"Contribution" shall mean any work of authorship, including the original version of the Work and any modifications or additions to that Work or Derivative Works thereof, that is intentionally submitted to Licensor for inclusion in the Work by the copyright owner or by an individual or Legal Entity authorized to submit on behalf of the copyright owner. For the purposes of this definition, "submitted" means any form of electronic, verbal, or written communication sent to the Licensor or its representatives, including but not limited to communication on electronic mailing lists, source code control systems, and issue tracking systems that are managed by, or on behalf of, the Licensor for the purpose of discussing and improving the Work, but excluding communication that is conspicuously marked or otherwise designated in writing by the copyright owner as "Not a Contribution." "Contributor" shall mean Licensor and any individual or Legal Entity on behalf of whom a Contribution has been received by Licensor and subsequently incorporated within the Work.

2. Grant of Copyright License. Subject to the terms and conditions of this License, each Contributor hereby grants to You a perpetual, worldwide, non-exclusive, no-charge, royalty-free, irrevocable copyright license to reproduce, prepare Derivative Works of, publicly display, publicly perform, sublicense, and distribute the Work and such Derivative Works in Source or Object form.

3. Grant of Patent License. Subject to the terms and conditions of this License, each Contributor hereby grants to You a perpetual, worldwide, non-exclusive, no-charge, royalty-free, irrevocable (except as stated in this section) patent license to make, have made, use, offer to sell, sell, import, and otherwise transfer the Work, where such license applies only to those patent claims licensable by such Contributor that are necessarily infringed by their Contribution(s) alone or by combination of their Contribution(s) with the Work to which such Contribution(s) was submitted. If You institute patent litigation against any entity (including a cross-claim or counterclaim in a lawsuit) alleging that the Work or a Contribution incorporated within the Work constitutes direct or contributory patent infringement, then any patent licenses granted to You under this License for that Work shall terminate as of the date such litigation is filed.

4. Redistribution. You may reproduce and distribute copies of the Work or Derivative Works thereof in any medium, with or without modifications, and in Source or Object form, provided that You meet the following conditions:

(a) You must give any other recipients of the Work or Derivative Works a copy of this License; and

(b) You must cause any modified files to carry prominent notices stating that You changed the files; and

(c) You must retain, in the Source form of any Derivative Works that You distribute, all copyright, patent, trademark, and attribution notices from the Source form of the Work, excluding those notices that do not pertain to any part of the Derivative Works; and

(d) If the Work includes a "NOTICE" text file as part of its distribution, then any Derivative Works that You distribute must include a readable copy of the attribution notices contained within such NOTICE file, excluding those notices that do not pertain to any part of the Derivative Works, in at least one of the following places: within a NOTICE text file distributed as part of the Derivative Works; within the Source form or documentation, if provided along with the Derivative Works; or, within a display generated by the Derivative Works, if and wherever such third-party notices normally appear. The contents of the NOTICE file are for informational purposes only and do not modify the License. You may add Your own attribution notices within Derivative Works that You distribute, alongside or as an addendum to the NOTICE text from the Work, provided that such additional attribution notices cannot be construed as modifying the License. You may add Your own copyright statement to Your modifications and may provide additional or different license terms and conditions for use, reproduction, or distribution of Your modifications, or for any such Derivative Works as a whole, provided Your use, reproduction, and distribution of the Work otherwise complies with the conditions stated in this License.

5. Submission of Contributions. Unless You explicitly state otherwise, any Contribution intentionally submitted for inclusion in the Work by You to the Licensor shall be under the terms and conditions of this License, without any additional terms or conditions.

Notwithstanding the above, nothing herein shall supersede or modify the terms of any separate license agreement you may have executed with Licensor regarding such Contributions.

6. Trademarks. This License does not grant permission to use the trade names, trademarks, service marks, or product names of the Licensor, except as required for reasonable and customary use in describing the origin of the Work and reproducing the content of the NOTICE file.

7. Disclaimer of Warranty. Unless required by applicable law or agreed to in writing, Licensor provides the Work (and each Contributor provides its Contributions) on an "AS IS" BASIS, WITHOUT WARRANTIES OR CONDITIONS OF ANY KIND, either express or implied, including, without limitation, any warranties or conditions of TITLE, NON-INFRINGEMENT, MERCHANTABILITY, or FITNESS FOR A PARTICULAR PURPOSE. You are solely responsible for determining the appropriateness of using or redistributing the Work and assume any risks associated with Your exercise of permissions under this License.

8. Limitation of Liability. In no event and under no legal theory, whether in tort (including negligence), contract, or otherwise, unless required by applicable law (such as deliberate and grossly negligent acts) or agreed to in writing, shall any Contributor be liable to You for damages, including any direct, indirect, special, incidental, or consequential damages of any character arising as a result of this License or out of the use or inability to use the Work (including but not limited to damages for loss of goodwill, work stoppage, computer

failure or malfunction, or any and all other commercial damages or losses), even if such Contributor has been advised of the possibility of such damages.

9. Accepting Warranty or Additional Liability. While redistributing the Work or Derivative Works thereof, You may choose to offer, and charge a fee for, acceptance of support, warranty, indemnity, or other liability obligations and/or rights consistent with this License. However, in accepting such obligations, You may act only on Your own behalf and on Your sole responsibility, not on behalf of any other Contributor, and only if You agree to indemnify, defend, and hold each Contributor harmless for any liability incurred by, or claims asserted against, such Contributor by reason of your accepting any such warranty or additional liability.

END OF TERMS AND CONDITIONS

APPENDIX: How to apply the Apache License to your work.

To apply the Apache License to your work, attach the following boilerplate notice, with the fields enclosed by brackets "{}" replaced with your own identifying information. (Don't include the brackets!) The text should be enclosed in the appropriate comment syntax for the file format. We also recommend that a file or class name and description of purpose be included on the same "printed page" as the copyright notice for easier identification within third-party archives.

Copyright 2019 Thomas Levesque Licensed under the Apache License, Version 2.0 (the "License"); you may not use this file except in compliance with the License. You may obtain a copy of the License at

http://www.apache.org/licenses/LICENSE-2.0

Unless required by applicable law or agreed to in writing, software distributed under the License is distributed on an "AS IS" BASIS, WITHOUT WARRANTIES OR CONDITIONS OF ANY KIND, either express or implied. See the License for the specific language governing permissions and limitations under the License.

License Agreement

For Open Source Computer Vision Library

(3-clause BSD License)

Copyright (C) 2000-2020, Intel Corporation, all rights reserved.

Copyright (C) 2009-2011, Willow Garage Inc., all rights reserved.

Copyright (C) 2009-2016, NVIDIA Corporation, all rights reserved.

Copyright (C) 2010-2013, Advanced Micro Devices, Inc., all rights reserved.

Copyright (C) 2015-2016, OpenCV Foundation, all rights reserved.

Copyright (C) 2015-2016, Itseez Inc., all rights reserved.

Copyright (C) 2019-2020, Xperience AI, all rights reserved.

Third party copyrights are property of their respective owners.

Redistribution and use in source and binary forms, with or without modification, are permitted provided that the following conditions are met:

- * Redistributions of source code must retain the above copyright notice, this list of conditions and the following disclaimer.
- * Redistributions in binary form must reproduce the above copyright notice, this list of conditions and the following disclaimer in the documentation and/or other materials provided with the distribution.
- * Neither the names of the copyright holders nor the names of the contributors may be used to endorse or promote products derived from this software without specific prior written permission.

This software is provided by the copyright holders and contributors "as is" and any express or implied warranties, including, but not limited to, the implied warranties of merchantability and fitness for a particular purpose are disclaimed.

In no event shall copyright holders or contributors be liable for any direct, indirect, incidental, special, exemplary, or consequential damages (including, but not limited to, procurement of substitute goods or services; loss of use, data, or profits; or business interruption) however caused and on any theory of liability, whether in contract, strict liability, or tort (including negligence or otherwise) arising in any way out of the use of this software, even if advised of the possibility of such damage.

Collection of Usage Data

This software may collect data about utilization of this software and send it to i-PRO Co., Ltd. In particular, we use this data to improve our products and services. You can stop this data collection by unchecking "Send anonymous data to improve this software and user experience." checkbox.

The following is an example of the data collected by this software. We do not collect data about your personal information.

- Part number detected by this software and the operating status of each device
- Basic information of the PC on which this software is running (OS type / locale information / memory / screen size)
- Operating status of this software

Transfer/disposal

- Transfer this software according to the "Software License Agreement" to be displayed on the installation screen.
- When disposing of a PC on which this software has been installed, be sure to initialize the settings and uninstall this software. If this software is uninstalled without initializing the settings, there is a risk of information leakage due to the setting information being remained inside the PC. Even in the case of transfer or repair, carry out the above procedure as necessary.
 - If the PC on which this software is installed or the storage device connected to the PC is to be passed to someone for transfer, disposal, repair and other reasons, pay careful attention to the data handled there, and it is your responsibility to transfer, dispose, and repair. When abandoning the storage media, it is recommended to destroy data physically after deleting it.

Network Security

As you will use this product connected to a network, your attention is called to the following security risks.

- (1)Leakage or theft of information through this product
- (2)Use of this product for illegal operations by persons with malicious intent

(3)Interference with or stoppage of this product by persons with malicious intent

It is your responsibility to take precautions such as those described below to protect yourself against the above network security risks.

- Use this product in a network secured by a firewall, etc.
- If this product is connected to a network that includes PCs, make sure that the system is not infected by computer viruses or other malicious entities (using a regularly upgraded anti-virus program, anti-spyware program, etc.).
- Protect your network against unauthorized access by restricting users to those who log in with an authorized user name and password.
- Apply measures such as user authentication to protect your network against leakage or theft of information, including image data, authentication information (user names and passwords), alarm mail information, FTP server information.

About "Grid Display" function

The grid display function is for viewing angle adjustment for some extension software.

Appropriate object size is published on our website<Control No.: C0320>.



https://i-pro.com/global/en/surveillance/training-support/support/technical-information

Note: In case of using in Japan, please refer the following.

https://i-pro.com/products_and_solutions/ja/surveillance/learning-and-support/knowledge-base/technical-information

i-PRO Co., Ltd.

https://www.i-pro.com/

© i-PRO Co., Ltd. 2024

av1008-73